

Solar Mobile Surveillance Trailer with IP Cameras

- Extended Run-Time with Solar Panel Assist
- Equipped with 2 Hi-Definition IP Cameras
- Compact and Durable Design

SOLRTR2130-IP 

The Innovative Netvision Mobile Solar Trailer provides virtually indefinite run time anywhere there is a sun rating of 4.0 or better with its 365 Watts of DC Solar capacity. Its heavy duty frame and steel cabinet construction provide a versatile transportable unit. A mast elevation of 30 feet for the cameras provides a vantage point for the High Definition cameras.

Complete IP Solution Compatible with Milestone, ONSSI and Genetec

Trailer Features

Standard Trailer Design

- Heavy-duty frame design with 2500 lbs rated axle
- DOT approved lighting package to include marker lights with wire connection
- Heavy Duty trailer mounted Locking Mast
- 30' (9 m) extended height of operation
- Un-guyed system capable of withstanding high wind speeds up to 60MPH
- Spiral conduit for cable deployment
- Fork lift pockets for easy transportation
- Anti-Corrosion powder coated 12 gauge steel cab construction
- Standard 2" ball hitch
- "On Demand" vented design for cool operation of electronics
- 3 X 2000 lbs jack stands with extendable locking outriggers for stability

Anti-theft Measures

- Removable trailer tongue
- Dual locking compartment doors
- Wheel clamp/boot immobilizes trailer
- Online GPS tracking for easy locating (optional)
- Offsite event recording
- Onboard Shock Sensor to detect tampering of the trailer

Dimensions

Deployed Length	144"
Travel Width	74"
Deployed Width	132"
Travel Height	79"
Deployed Height	414"

Electrical

AC 120 VOLT	Normal 1 AMP, charge 15 AMP;
DC Internal	12V 1000 AMP hour deep cycle batteries
DC Solar	2 x 140 WATT high efficiency rugged solar panel 1 x 85 WATT Solar Panel



NVR Specs

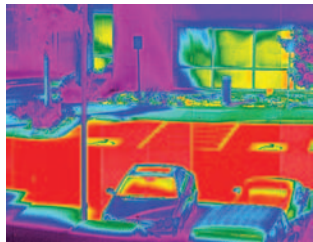
General

CPU	Intel Atom D525 Processor
Memory	2GB DDR3
Storage	500GB
OS	Windows Embedded Std 7

Communications

Standard

Cellular	CDMA EVDO, GSM/HSDPA
GPS	12 channel receiver
Wireless LAN	802.11b/g



Pelco Spectra HD Series Network Dome Specs

General

Imaging Device	1/3-inch CCD
Resolution	1.3 MP (960p @ 20fps, 720p @ 30fps)
Optical Zoom	18X
Maximum Resolution	1280 x 960
Lens	f/1.6 (focal length, 4.7 ~ 84.6 mm optical)
Aspect Ratios	4:3 or 16:9
Sensitivity	f/1.6; 2,850°K; SNR >24dB
Day/Night Capabilities	Yes
IR Cut Filter	Yes
Wide Dynamic Range	60 dB
Iris Control	Auto iris with manual override
Backlight Compensation	Yes
Environmental Max.	140°F (60°C) absolute maximum; 122°F (50°C) sustained maximum
Environmental Min.	-60°F (-51°C) absolute minimum; minimal icing at sustained minimum of -50°F (-45°C); prevents icing at sustained minimum of -22°F (-30°C); de-ices 0.1 inch (2.5 mm) within 3 hours after power-up
Video Encoding	H.264 high, main, or base profile and MJPEG

Pan Tilt Zoom

Variable Speed	0.1° to 400°
Preset Accuracy	±0.1°
Pan Movement	360° continuous pan rotation
Vertical Tilt	+0° to -90°
Manual Pan/Tilt Speeds	
Pan	0.1° to 80°/sec manual operation, 150°/sec Turbo
Tilt	0.1° to 40°/sec manual operation
Preset Speeds	Pan: 400°/sec Tilt: 160°/sec



Options

Communications

Non Line of Sight	900MHz Point to Multipoint Radio
Line of Sight	5.8GHz Point to Multipoint Radio
On-Board	Analytic
Satellite Uplink	Communication in Remote Areas
One Way Audio	Microphone Kit - Listen Only
Two-way Audio	Microphone/Speaker Kit
Cellular Booster	Antenna Upgrade
GPS	Online Tracking

Camera

Substitute IR Thermal Imaging Camera

Miscellaneous

Hard Drive	Upgrade to 2TB
Battery Backup	80 Amp/Hr
HP Laptop	Preconfigured with remote access software
Emergency Lights	Rotating Red and Blue Lights
Auto Generator Start	Temp/Volt
Siren Kit	Siren/Horn for Audible Alarm
Electric Winches	2 for Mast Operation
LED Light Bar	2 White or IR

Custom Integration

Custom configurations available for integration with OnSSI, Milestone, Genetec and other products.