

GreenPower Solar Trailer

SOLR2130 

Longest Runtime in the Industry

- Total Solar Solution for 24/7 Operation
- Cameras with Auto Tracking & Pan Tilt Zoom (PTZ)
- Years of Operation with Minimal Maintenance
- Remotely Monitored and Controlled

You can now have a sustainable solution for your surveillance needs. The **GreenPower** Solar Trailer is designed for applications where recharging and refueling is a challenge. We provide easy monitoring and control via cellular or WiFi networks. You will sleep better knowing that our system is always on duty.

Features

General

- Long distance monitoring via radio, WiFi, satellite, and/or cellular
- Wide-area coverage with 30-foot mast
- Remotely view and control using your computer or smartphone
- Twenty-four seven, year-round solar operation in many locations
- Advanced Analytics available for analyzing video feeds and setting alarms
- Provides network connectivity and power for other sensors
- Integrated video recorder
- Easily transported with standard 2" ball hitch or pintle
- "On Demand" vented design for cool operation of electronics
- Extendable locking outriggers for stability
- Real-time alerts and monitoring via web, email and smartphones

Anti-theft Measures

- Removable trailer tongue
- Dual locking compartment doors
- Wheel clamp/boot immobilizes trailer
- Online GPS tracking for easy locating (optional)
- Offsite event recording
- Onboard Shock Sensor to detect tampering of the trailer



360° monitoring

Surveillance Never Sleeps with Netvision

Digital Video Recorder Specs

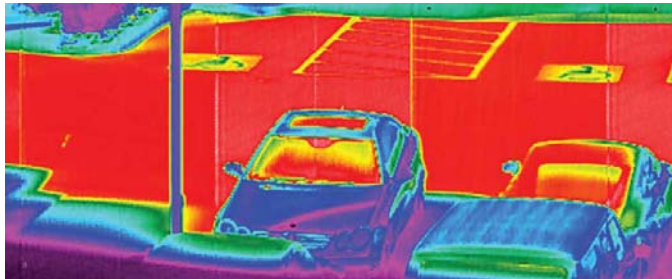
Video

Standard	NTSC / PAL
Compression	MPEG4
Frame Rate	30FPS
Storage	1000GB Hard Drive

Communications

Standard

Cellular	CDMA EVDO, GSM/HSDPA
GPS	12 channel receiver
Wireless LAN	802.11b/g



Infrared Available

Options

Communications

Non Line of Sight	900MHz Point to Multipoint Radio
Line of Sight	5.8GHz Point to Multipoint Radio
On-Board	Analytic
Satellite Uplink	Communication in Remote Areas
One Way Audio	Microphone Kit - Listen Only
Two-way Audio	Microphone/Speaker Kit
Cellular Booster	Antenna Upgrade
GPS	Online Tracking

Camera

- Upgrade Smart Track II PTZ Camera to 36x Zoom
- Substitute IR Thermal Imaging Camera
- Upgrade to 4 cameras

Smart Track II PTZ Dome Camera Specs

Features

- Auto search and track on moving object
- Programmable zone title, preset, title, and dome title
- Continuous 360 degree pan, 0 ~ 90 degree tilt with auto flip
- Multi protocols supported (Pelco D/P, Kalatel) with adjustable baud rate
- Alarm input and relay output

General

Pick-up Device	Sony 1/4" Color CCD
Effective Pixels	768 (H) x 494 (V)
Signal	PAL / NTSC (Selectable)
Scanning	2:1 interlace
Resolution	480 TV lines Color / 520 TV lines B&W
Minimum Illumination	0.5 lux (Color) / 0.01 lux (B&W)
S/N Ratio	50dB
D/N	Yes
WB / BLC	Auto / Manual
Video Output	1.0±0.2V P-P
Operating Temperature	-13°F to 158°F (without heater) -58°F to 158°F (with heater)
Weather Resistance	IP66 protection
Control Functions	PTZ, focus, 255 presets, home, patrol
Privacy Zone	8 Zone settings
Patrol	Stop / Play / Learn
Shutter	OFF (1/60), Auto, 1/100 - 1/10,000
AGC	ON/OFF
Auto focus	Manual/Auto
Iris	ALC / Manual

Pan Tilt Zoom

Panning/Tilt Range	Pan: 0°~ 360°, Continuous; Tilt: 0°~ 90°
Baud Rate	1200bps ~ 19200bps
Panning Modes	Manual, auto, manual position, sequential
Panning/Tilt Speed	Pan: 0.05°~ 240°/sec; Tilt: 0.03°~160°/sec
Tilt Modes	Manual, manual position, sequential
Zoom Ratio	26x Optical Standard (36x optional)
Focal Length	3.5mm ~ 91mm
Iris Range	F1.6 ~ F3.8

Miscellaneous

Hard Drive	Upgrade to 2TB
HP Laptop	Preconfigured with remote access software
Emergency Lights	Rotating Red and Blue Lights
Auto Generator Start	Temp/Volt
Siren Kit	Siren/Horn for Audible Alarm
Electric Winches	2 for Mast Operation
LED Light Bar	High Intensity White Light or Infrared