

Rugged Mobile Video Surveillance Trailer

IP Surveillance Trailer with Diesel Generator **PSTR3124WB**

- Designed for off-road deployment
- Rugged Wide Track Trailer for maximum stability
- Operates in extreme environmental conditions
- Remotely monitored and controlled
- 24/7 unattended operation for months

Your need for surveillance assets extends beyond the reach of asphalt and concrete roads. Netvision has developed a wide-track surveillance trailer designed for towing by heavy-duty trucks on dirt roads. It provides remote operation and monitoring via radio, WiFi, satellite and cellular networks, and can operate unattended for up to four months with its huge 55 gallon fuel cell, diesel generator, and solar panel. Full solar systems are all available and can operate even longer. It is compatible with Milestone, Genetech, and OSSI video surveillance systems. Contact us today for a demonstration.



Features

- Wide-area coverage with 30-foot mast
- High-definition IP (network) cameras with pan, tilt, and zoom (PTZ)
- Hi-intensity lighting operated via timers or remote control
- Can be remotely viewed and controlled using iPhones, Android phones, laptops, and desktop computers
- Unattended operation for months at a time. Self-recharging using solar power and computer controlled diesel generator
- Wide-track carriage for transport behind large vehicles over dirt roads
- Monitoring and control over long distances using radio, WiFi, satellite, and/or cellular communications
- Advanced Analytics available for video feeds and setting alarms
- Provides network connectivity and power for other sensors
- Optional integrated Network Video Recorder (NVR)

Anti-theft Measures

- Online GPS tracking for easy locating
- Wheel clamp/boot immobilizes trailer
- Dual locking compartment doors
- Flashing strobe beacon



Surveillance Never Sleeps with Netvision

NVR Specs

General

CPU	Intel Atom D525 Processor
Memory	2GB DDR3
Storage	500GB
OS	Windows Embedded Std 7

Communications

Standard

Cellular	CDMA EVDO, GSM/HSDPA
GPS	12 channel receiver
Wireless LAN	802.11b/g

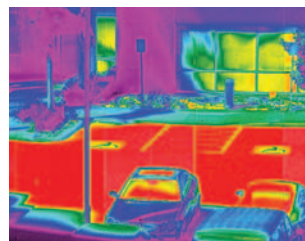
Pelco Spectra HD Series Network Dome Specs

General

Imaging Device	1/3-inch CCD
Resolution	1.3 MP (960p @ 20fps, 720p @ 30fps)
Optical Zoom	18X
Maximum Resolution	1280 x 960
Lens	f/1.6 (focal length, 4.7 ~ 84.6 mm optical)
Aspect Ratios	4:3 or 16:9
Sensitivity	f/1.6; 2,850°K; SNR >24dB
Day/Night Capabilities	Yes
IR Cut Filter	Yes
Wide Dynamic Range	60 dB
Iris Control	Auto iris with manual override
Backlight Compensation	Yes
Environmental Max.	140°F (60°C) absolute maximum; 122°F (50°C) sustained maximum
Environmental Min.	-60°F (-51°C) absolute minimum; minimal icing at sustained minimum of -50°F (-45°C); prevents icing at sustained minimum of -22°F (-30°C); de-ices 0.1 inch (2.5 mm) within 3 hours after power-up
Video Encoding	H.264 high, main, or base profile and MJPEG

Pan Tilt Zoom

Variable Speed	0.1° to 400°
Preset Accuracy	±0.1°
Pan Movement	360° continuous pan rotation
Vertical Tilt	+0° to -90°
Manual Pan/Tilt Speeds	
Pan	0.1° to 80°/sec manual operation, 150°/sec Turbo
Tilt	0.1° to 40°/sec manual operation
Preset Speeds	Pan: 400°/sec Tilt: 160°/sec



Infrared Available

Options

Communications

Non Line of Sight	900MHz Point to Multipoint Radio
Line of Sight	5.8GHz Point to Multipoint Radio
On-Board	Analytic
Satellite Uplink	Communication in Remote Areas
One Way Audio	Microphone Kit - Listen Only
Two-way Audio	Microphone/Speaker Kit
Cellular Booster	Antenna Upgrade
GPS	Online Tracking

Miscellaneous

Hard Drive	Upgrade to 2TB
HP Laptop	Preconfigured with remote access software
Emergency Lights	Rotating Red and Blue Lights
Auto Generator Start	Temp/Volt
Siren Kit	Siren/Horn for Audible Alarm
Electric Winches	2 for Mast Operation
LED Light Bar	High Intensity White Light or Infrared

Camera

- Add AXIS Thermal Imaging Camera
- Upgrade to 4 cameras

Custom Integration

Custom configurations available for integration with OnSSI, Milestone, Genetec and other products.