

## PM-M12CELL

Celcam



### Features

- Uses the cellular network to transfer camera images to remote PC's
- Local WIFI for easy set-up and configuration
- On board DVR with up to 32GB storage (7 day storage)
- Nema 4 rated weatherproof lockable enclosure
- Wall or pole mountable

Unique Day/Night camera technology without moving parts guarantees extreme light sensitivity and ensures long-term reliability. Whether in broad daylight or at night, security cameras need to be capable of working around the clock and delivering high-resolution images. This is the only way to catch criminals. MOBOTIX is the only camera that switches between sensors purely electronically, without any moving parts. This increases the life span of the product and minimizes maintenance.

### Camera Features

- Two separate image sensors for day and night-time operation
- Integrated DVR with HiRes video recording
- Permanently fixed lenses at factory for simple installation
- Robust, low-maintenance and with concealed cable duct
- Weatherproof from -30° to +60°C (-22° to +140°F), (IP65)
- Digital continuous zoom, pan and tilt
- Integrated microphone, speaker and PIR motion detector
- Color: 2048 x 1536 (3Mega), Black/White: 1280 x 960 (Mega)
- User-/Group management, HTTPS/SSL



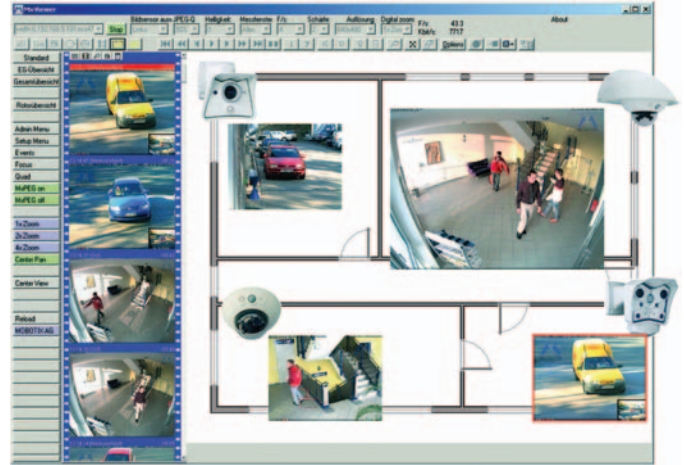
## Software Features

### Professional IP Video Management Free Of Charge

- Professional unrestricted version
- High performance with 30 smooth video streams
- Synchronized & simultaneous event search on several cameras

### Easy-to-use video management software

- Designed for the wide range of functions of the MOBOTIX cameras
- Works with internal camera recording
- Simple, quick setup; user-friendly and intuitive operation
- Compatible with touch panels
- Platform-independent format (Windows, Mac, Linux)



## Modem /Router Features

### Supports All Major Cellular Standards:

- High Speed 3G Modem PC-Card Slot & External Antenna Jack
- Enterprise-Class 3G Router & WiFi (802.11 a/b/g)
- 4 Port Ethernet LAN Switch + (1) Ethernet WAN Port
- Full VPN, Firewall & Security Functions
- Easy Management with Multiple Interfaces & SMTP

## Cellular Carriers

- |                    |                 |               |
|--------------------|-----------------|---------------|
| • Verizon Wireless | • Cingular      | • AT&T        |
| • Orange           | • Vodaphone     | • Rogers      |
| • Sprint PCS       | • Telstra       | • Movistar    |
| • Telus            | • Bell Mobility | • Telce       |
| • Alltel           | • O2            | • ICE I       |
| • Digicel          | • Hutchison     | • Mobile 8    |
| • Movistar         | • Telce         | • And More... |

**Offers fast, reliable, secure and cost-effective remote wireless Internet access on any CDMA or GSM wireless data network worldwide**

**Surveillance Never Sleeps with Netvision**

1200 Woodruff Rd, Unit B15, Greenville, South Carolina, USA, 29607